



## Conditions

**MAYDAY..MAYDAY..MAYDAY.... THIS IS VIKING SKY.....**

- |               |                                       |
|---------------|---------------------------------------|
| 1. Date       | 23-march-2019                         |
| 2. Time       | 14.00 local time                      |
| 3. Wind       | 50 gust 60 Kts (26 gusting to 31 m/s) |
| 4. Waves      | 20-30 feet                            |
| 5. Conditions | Showers of rain and snow              |

- |               |                               |
|---------------|-------------------------------|
| 1. Info       | Public Media and Social Media |
| 2. Ship       | Cruise ship, 1373 POB         |
| 3. Conditions | No propulsion - Near shore    |
| 4. POB        | Mostly elderly                |

**HRS Scramble's 4 helicopters**

[CHC Viking sky video](#)

**CHC Helikopter Service**

**VIKING SKY**

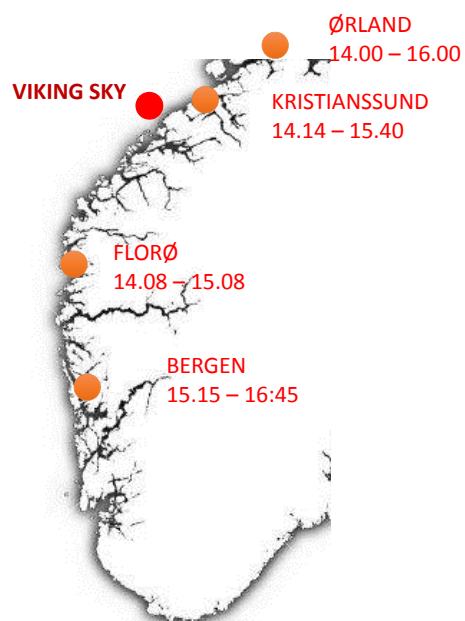


CHC - Viking Sky

2

## Scramble

### HRS Scramble 4 helicopters



 CHC Helikopter Service

CHC - Viking Sky

3

## Operation

### First Scramble – 14.00

Rescue 8 - first pickup 15.08 – 6 PAX

Rescue 5 – First pickup 15.40  
Leaves Rescue Man and Medic on Ship

Saver 40 – First Pickup 16.00

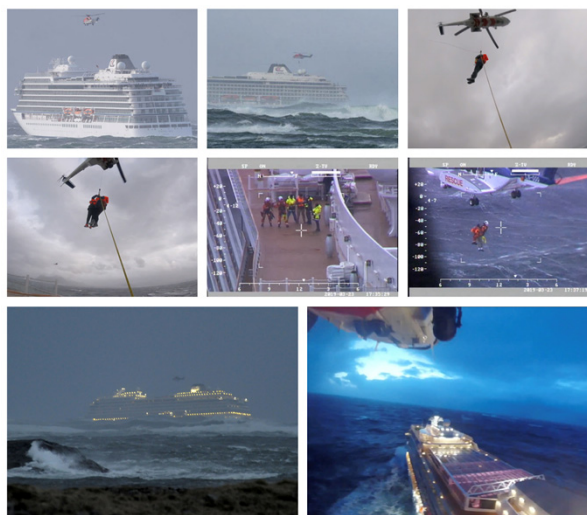
KV NJORD – OSC 16.30 (Sea Only)

Rescue 9 – First Pickup 16.40

### 87 People onshore

Møre APP – Air Coordinator by 16.50

Ground setup – Fuel, reception, waiting



 CHC Helikopter Service

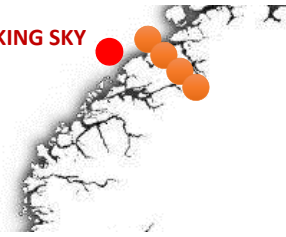
CHC - Viking Sky

4

## Operation - Routine



VIKING SKY



### Routine:

Ship -> offload -> refuel -> wait ->

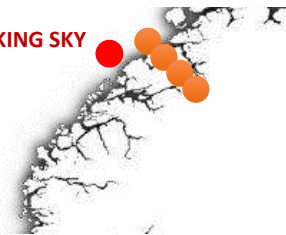
### Planning ahead:

- Replacement crew's
- Equipment
- Weather

## Operation - Challenges



VIKING SKY



EMS R17N CE ISO FDA

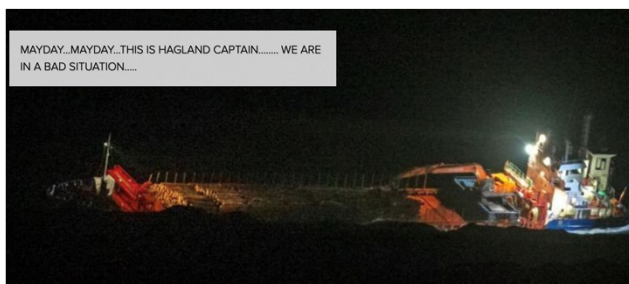
### Hoist point & equipment

- Anchor out – movements
- Straight into wind (no dual hoisting)
- Info regarding Passengers state
- The scale used equipment fast

### People

- Ship Crew + assist
- Passengers age (Physic and psyche)
- Air Crew – fatigue

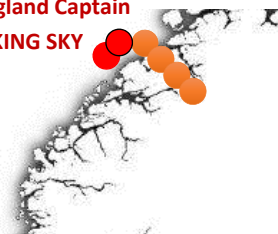
## NEW - Challenges



 CHC Helikopter Service

CHC - Viking Sky

Hagland Captain  
VIKING SKY



### Two very close in distress

- Flight track
- Flying into the dark
- Communication (CH16, Intercom, Air2Air, Møre, satphone)

### Assets

- Re-routed immediately (2 minuts)
- Stop escalating the situation
- 4 helicopters over

7

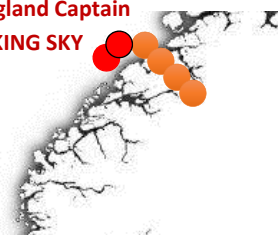
## Replacement – continuous operations



 CHC Helikopter Service

CHC - Viking Sky

Hagland Captain  
VIKING SKY



### CREW status and replacement

- Rescue men
- Pilots
- Technicians
- Hoist operators etc

### Assets and admin

- Extra Helicopter
- Inspection of operative helicopters
- Plane tickets, Hotels etc

8



# Viking Sky

