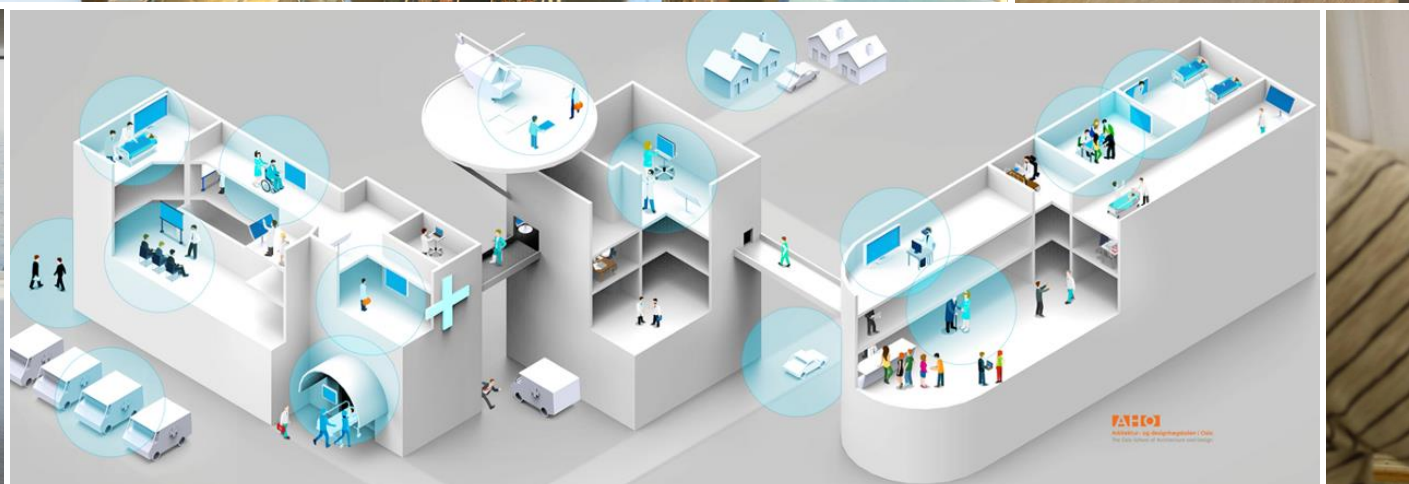




ocean industries concept lab









Multidisciplinary design research

Focus on:
Industrial and interaction design



SEDNA



The SEDNA project has received funding from the European Union's Horizon 2020 research and innovation programme under grant agreement no. 723526.

OpenRemote

How can we achieve harmonized design across multi-vendor remote operation centers?



NFR application

- Collaboration project
- June

Academic partners

- The Oslo School of Architecture and Design
- University of South-East Norway
- Norwegian University of Science and Technology
- Sintef Ocean
- Korean research institute of ships and ocean engineering

Industry and government

Kongsberg Maritime

Massterly

Maritime Robotics

Vard Electro

Fugro

The Norwegian Coastal Administration

The Norwegian Maritime Authority

DNV Maritime

Lloyd's Register

Halogen

Brunvoll

Skipper electronics

Norwegian Electric Systems,

SEAM

IoStudioTech

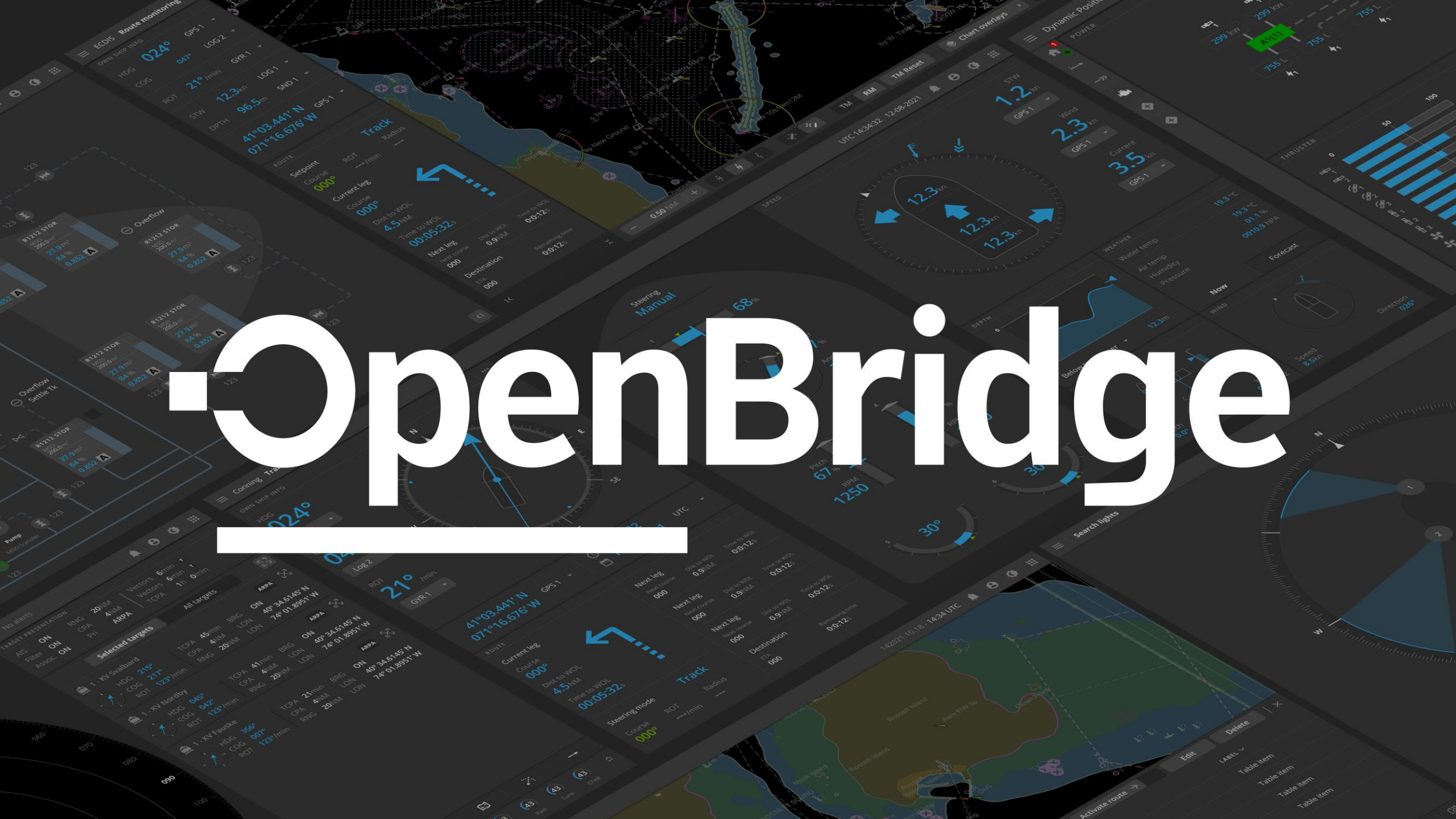
R. Stahl Tranberg

Develop knowledge that will enable user-friendly and consistently designed multi-vendor RMWs supporting distributed situational awareness and human automation interaction

1. Establish design requirements and design frameworks for a RMW UI design system. (WP1)
2. Demonstrate how DSA and HAI can be integrated in consistently designed multi-vendor RMWs. (WP2)
3. Expand current design systems frameworks and theory to include support for DSA and HAI. (WP3)
4. Involve an international network of maritime actors into the research and development process. (WP4)

An open platform for multi-vendor RMW UI design that can realise cross industry harmonised and user-friendly design of remote maritime workstations.

OpenBridge







A common design system on-ship and on-land

Tools to accelerate development of OpenRemote

About
Getting started
Regulations

User interface patterns

Application
Widgets
Settings
Vendor menu

Palette

Typography
Colors
Styles

Components

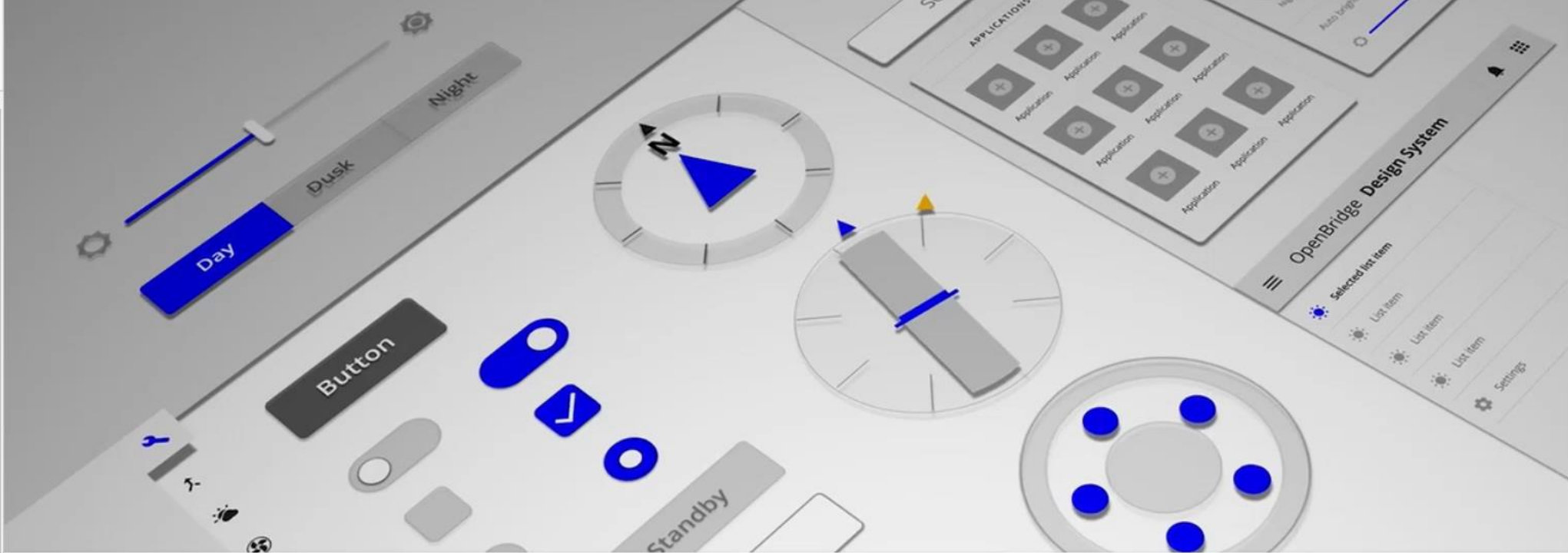
UI components ▾
Navigation components ▾
Alert components ▾
Maritime components ▾

Icons

Sizing

Case studies

Application cases ▾
Widget cases ▾



OpenBridge Design Guideline

A free resource for design of safe, user friendly and modern maritime workplaces.

[Get started](#)

[Latest updates](#)

Layers Assets A2 Support pag...
 Search
 Local components / C1 Buttons

- Button
- Function
- Label
- Navigation arrows
- Navigation cross
- Plus icons
- More ...
- Popup
- Page title

Search

- Page title Description with max two lines
- Page title Description with max two lines
- Page title Description with max two lines
- Page title Description with max two lines
- Page title Description with max two lines
- Page title Description with max two lines
- Page title Description with max two lines

Design Prototype Inspect

Background
 E5E5E5 100%

Grid Styles
 List container
 Base grid

Export



OpenBridge
Design System

Find components

- TEST
- INSTRUMENT
 - HDG & COG
 - Circular HDG
 - Large
 - Medium
 - Small
 - ROT
 - RUDDER
 - SOG & STW
 - Thruster & Propulsion
 - 01 Azimuth thruster
 - 03 Main Engine
 - Thruster Element
 - 02 Tunnel Thruster
 - WatchFace

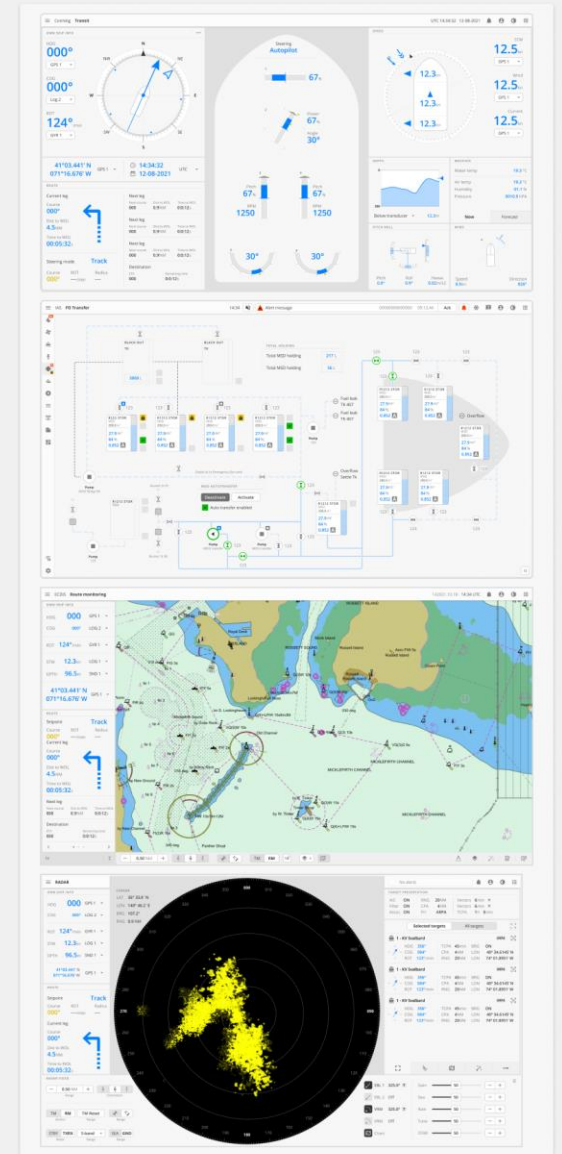
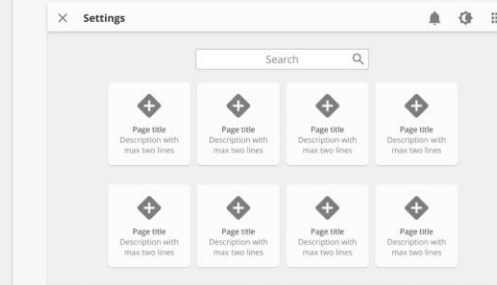
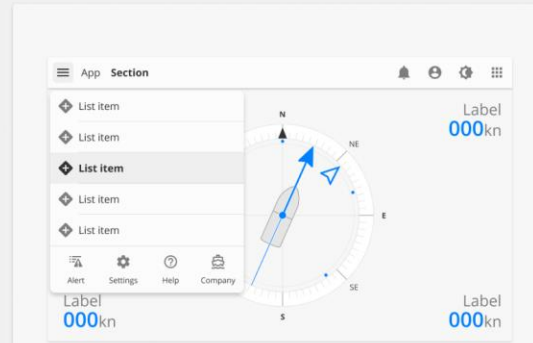
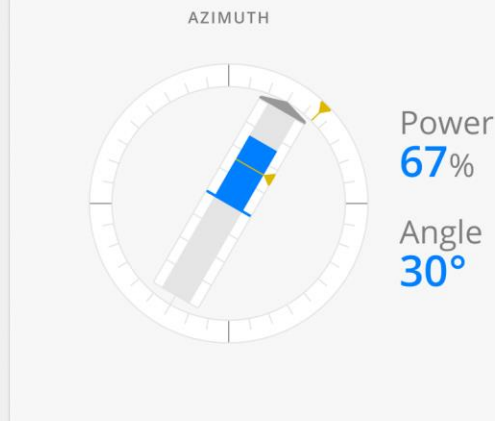
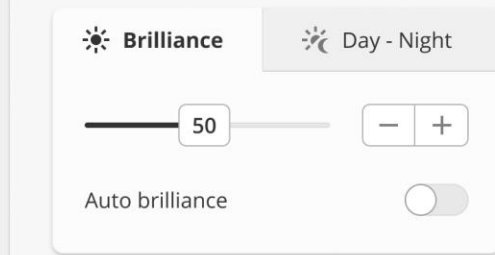
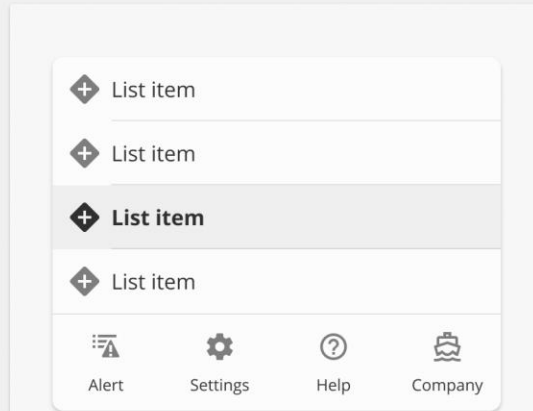
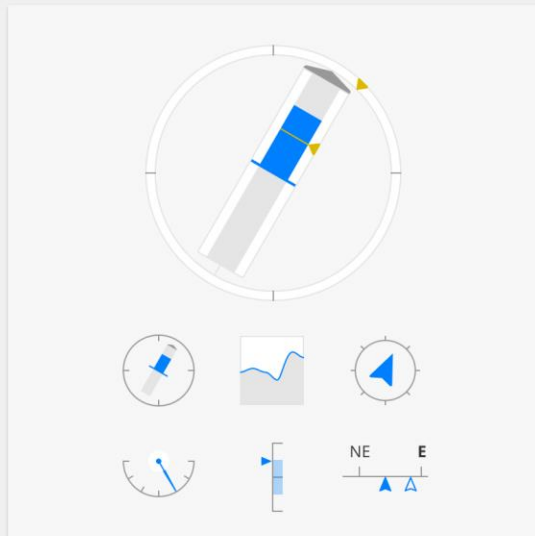
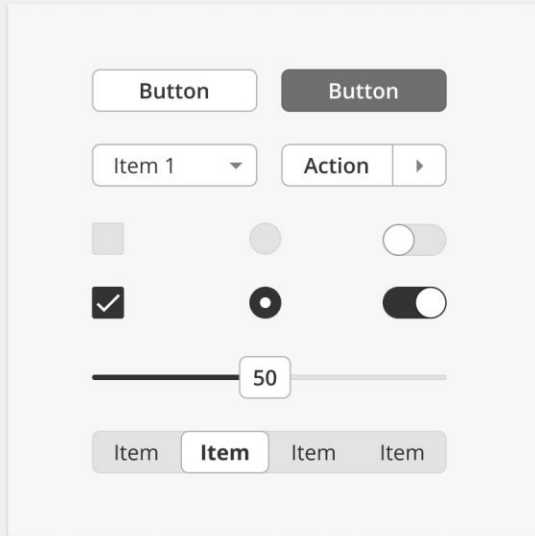
Canvas Docs

Controls (6) Actions

Name	Control
heading	0 <input type="range"/> 60 / 360
courseOverGround	0 <input type="range"/> 55 / 360
setPoint	0 <input type="range"/> 40 / 360
northUp	<input type="checkbox"/> False <input checked="" type="checkbox"/> True

From OpenBridge to OpenRemote

OpenBridge Structure



Fire alarm

Acknowledge alert

 Alert control



Brightness

 Dimming control



Palette




SEAQ





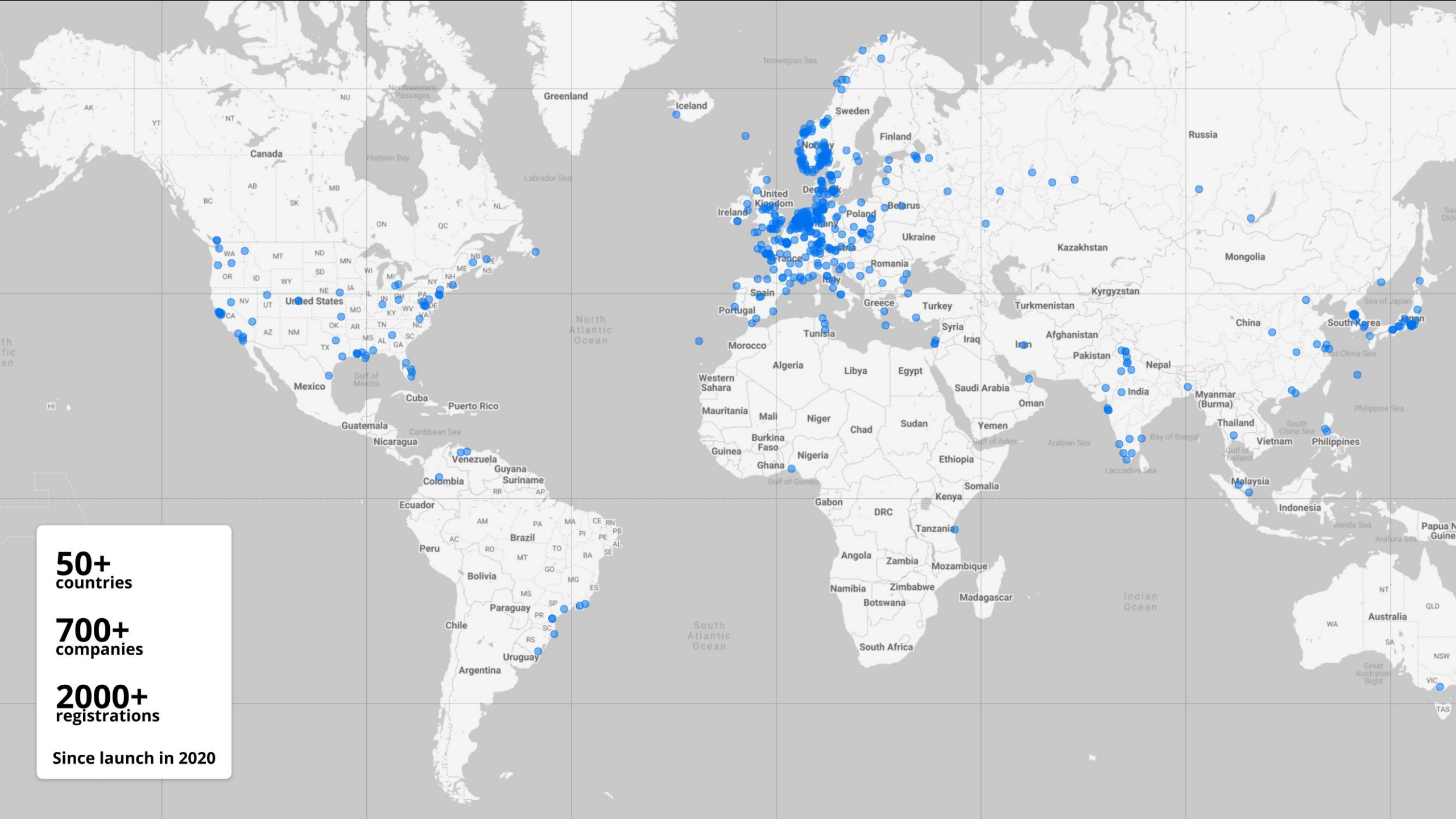
 Captain

 Deck worker

Expanding Upon OpenBridge

- Distributed situational awareness (**DSA**)
- Human automation interaction (**HAI**)

Adoption through open innovation



50+
countries

700+
companies

2000+
registrations

Since launch in 2020



BRUNVOLL



ALPHATRON



lilaas®



bachmann.

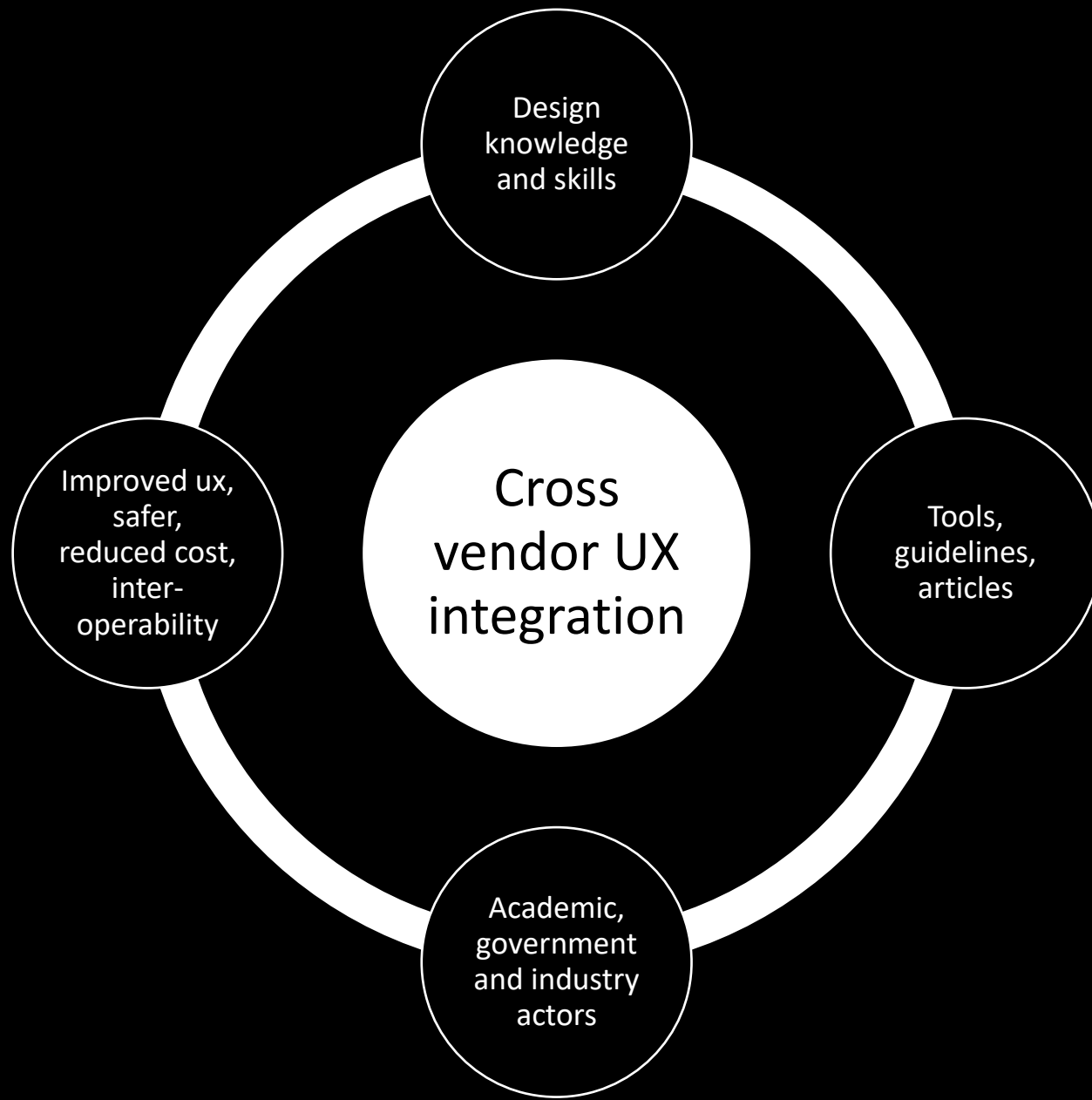


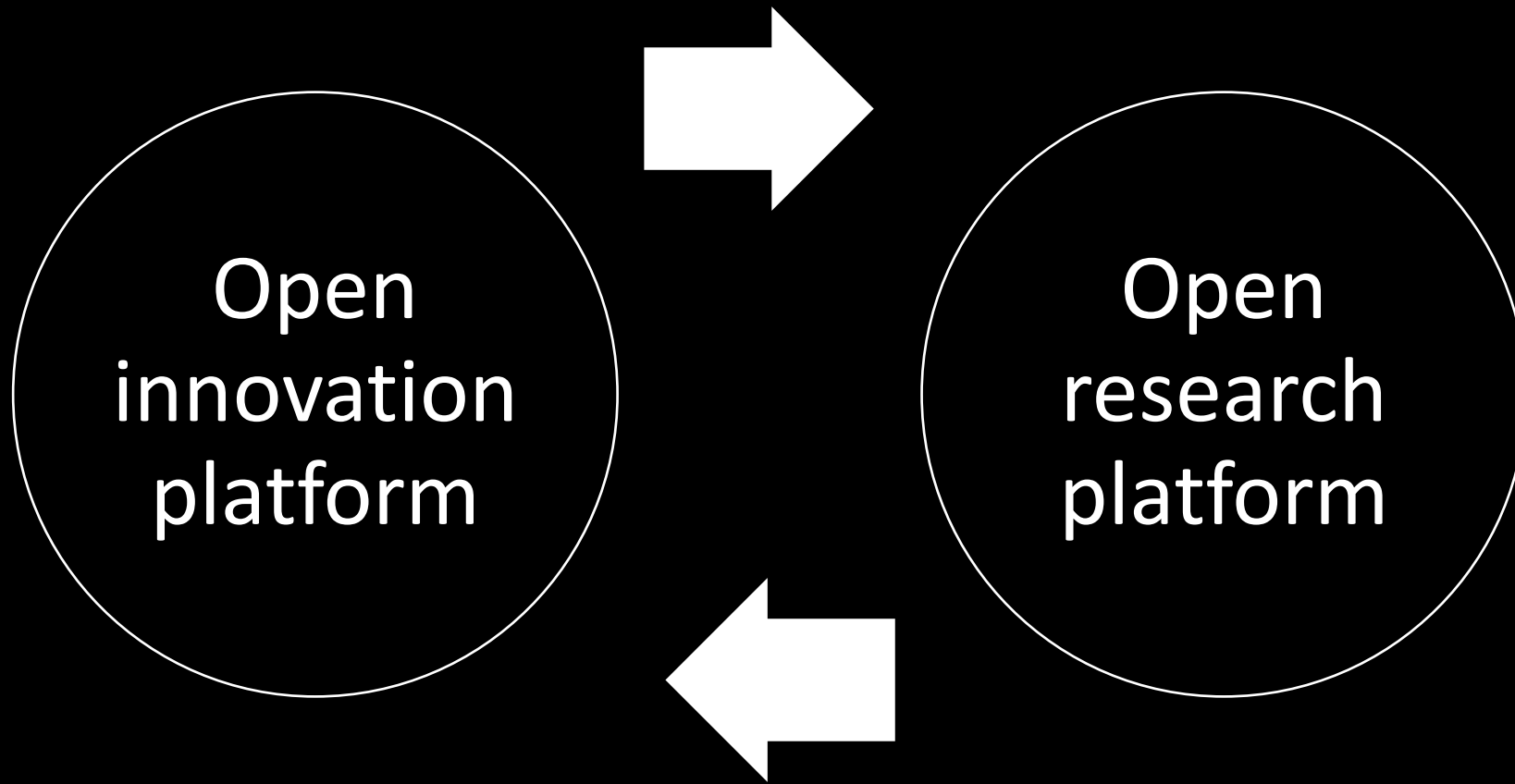
SKIPPER



MORILD
INTERAKTIV









ocean industries concept lab