

SINTEF Manufacturing AS

Photo: Shutterstock / PopTika

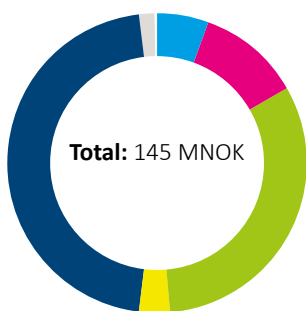


SINTEF Manufacturing is Norway's leading centre of expertise in manufacturing. Our ambition is to create sustainable and effective solutions which provide competitive advantages for the Norwegian manufacturing industry.

We provide expertise in automated production, product and production development, lean, value chain management and material technology, as well as laboratory and engineering services.

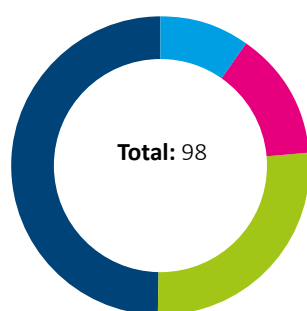
Funding sources

(% of net operational revenues)



● RCN Grant funding	5,7%
● NFR strategiske program	11,2%
● RCN project funding	31,9%
● Public sector funding	3,2%
● Industrial and business sector	46,2%
● International projects	1,9%
● Other revenues	0%

Employees

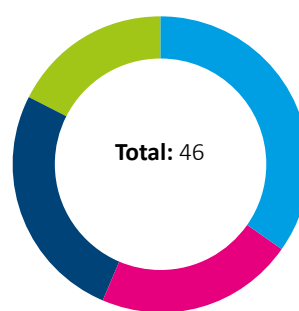


● Administrative	9,4
● Technical personell	13
● Engineers	25,6
● Research scientists	48 ¹

¹ 23 research scientists with a Ph.D.

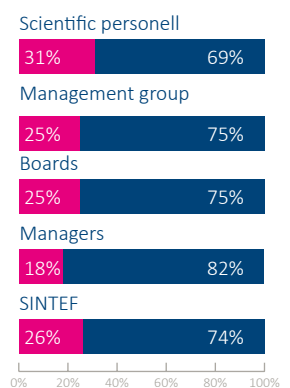
Publications

(incl. disseminations)



● Scientific articles in periodicals, series or anthologies	16
● Scientific monographs	0
● Scientific presentations and posters	10
● Reports	12
● Popular scientific articles and presentations	8
● Technical manuals, text books, etc.	0

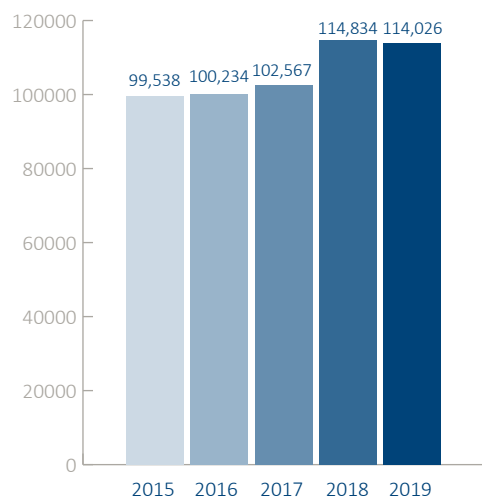
Equal opportunity



- Men
- Women

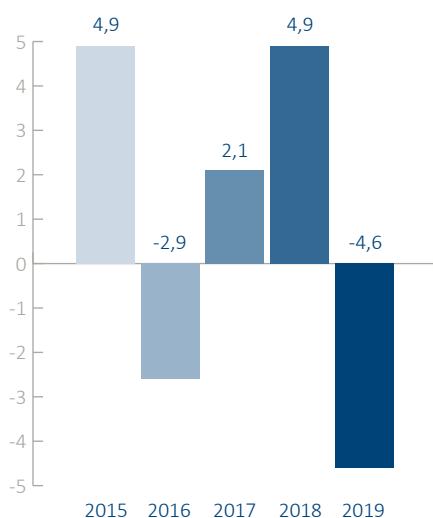
Net operating revenues

(MNOK)



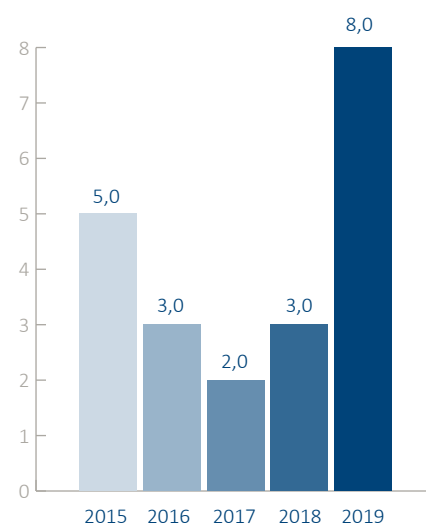
Net operating margin

(%)



Investments

Scientific equipment and buildings
(% av Net operating revenues)



Financial ratios

MNOK

FINANCIAL RESULT	2015	2016	2017	2018	2019
Gross operating revenues	124 787	127 816	131 826	146 274	144 921
Net operating revenues	99 538	100 234	102 567	114 834	114 026
Operating profit (loss)	4 920	(2 577)	2 133	5 676	(5 266)
Annual profit/loss	3 680	(2 116)	1 399	3 957	(5 238)
BALANCE					
Non-current assets	11 067	13 790	12 869	12 429	20 119
Current assets	46 597	46 689	52 835	72 519	52 620
Total assets	57 664	60 479	65 704	84 948	72 739
Equity	17 956	15 839	17 238	21 040	16 972
Liabilities	39 708	44 640	48 466	63 908	55 767
Total liabilities and shareholders' equity	57 664	60 479	65 704	84 948	72 739
PROFITABILITY					
Operating margin (%)	4,9 %	-2,6 %	2,1 %	4,9 %	-4,6 %
Total return on investment (%)	8,7 %	-4,2 %	3,4 %	7,6 %	-6,7 %
Return on equity (%)	8,0 %	-4,9 %	7,2 %	7,0 %	5,7 %
LIQUIDITY					
Net cash flow from operational activities	13	3	1	2	-14
Working capital ratio (1)	1,5	1,2	1,2	1,1	1,2
CAPITAL ADEQUACY					
Equity (%)	31,1 %	26,2 %	26,2 %	24,8 %	23,3 %
Operative working capital	15	9	10	9	0,4