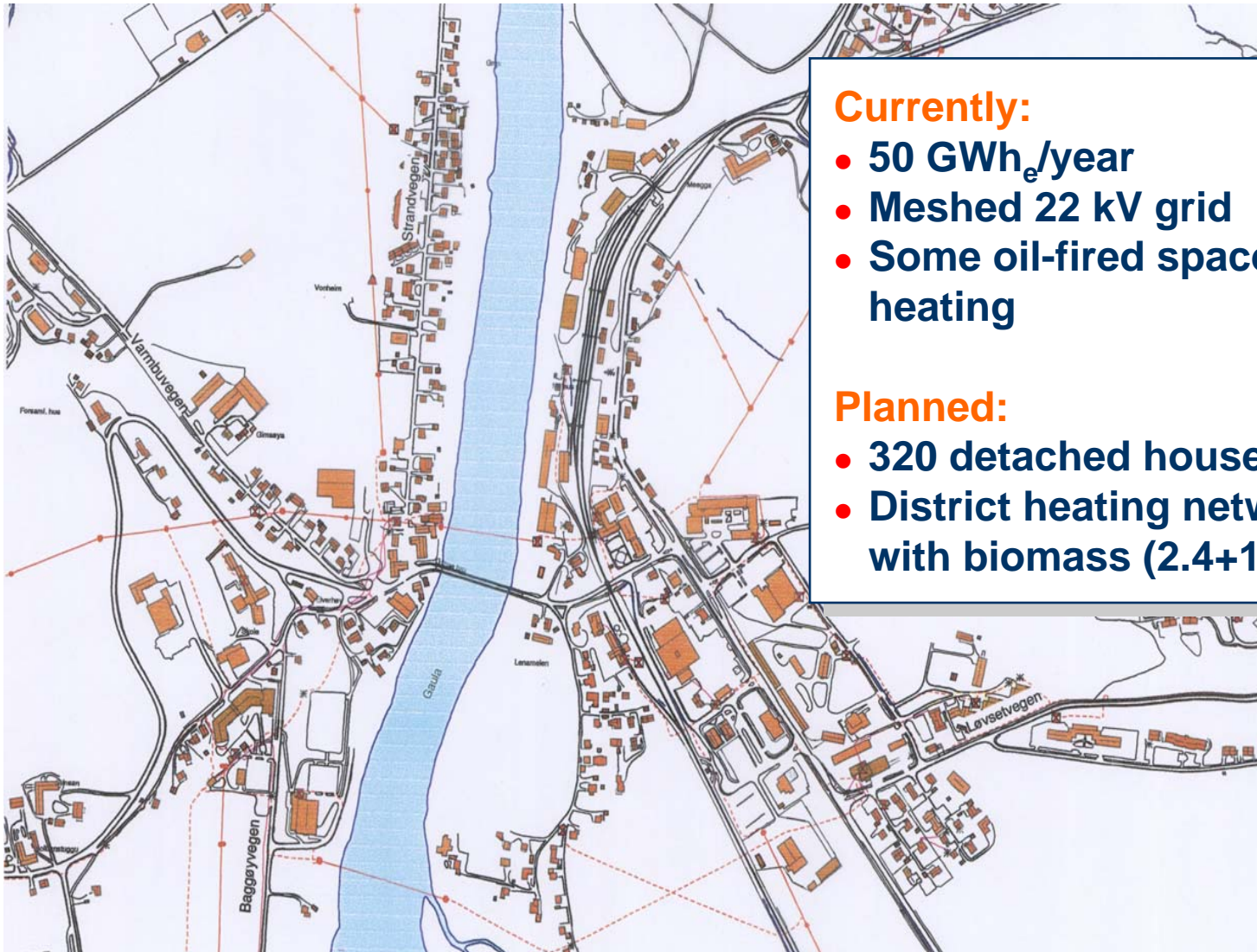


Case: The municipality of Melhus



Currently:

- 50 GWh_e/year
- Meshed 22 kV grid
- Some oil-fired space heating

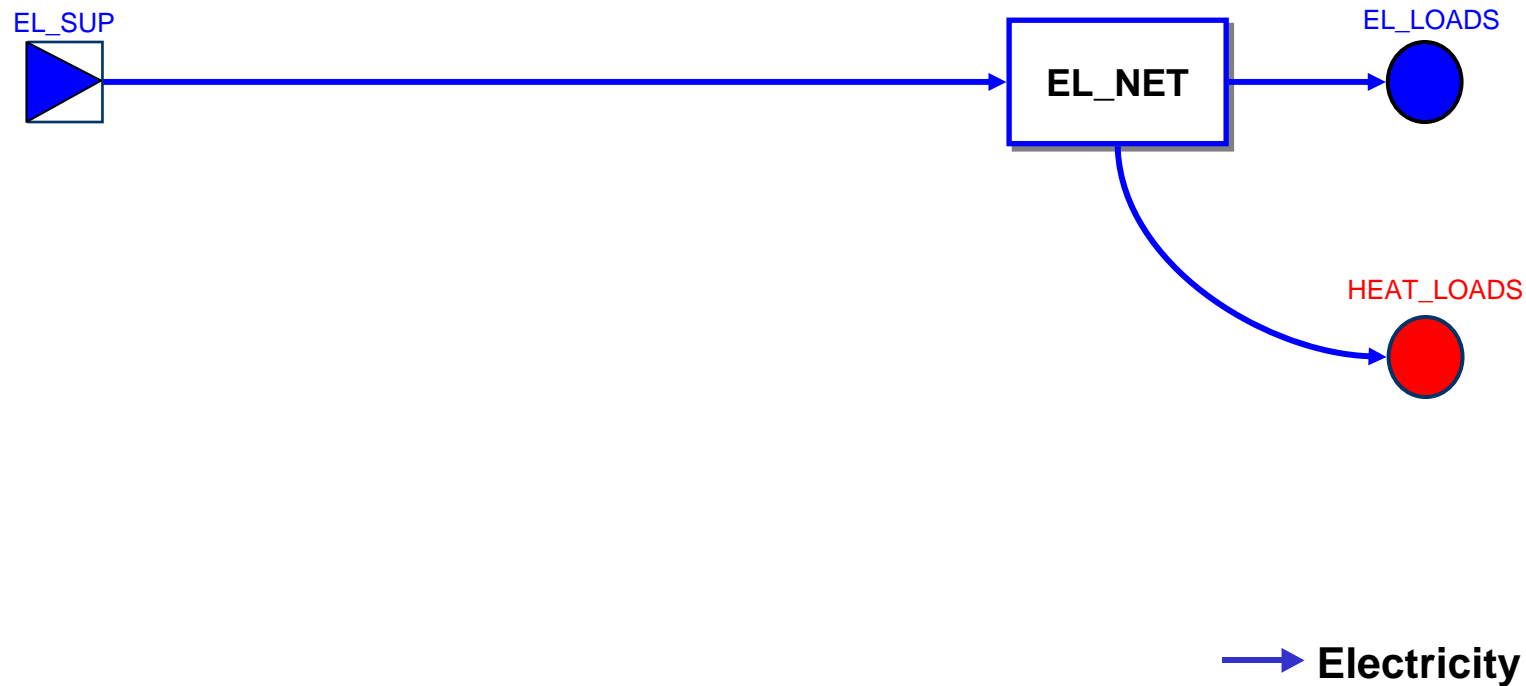
Planned:

- 320 detached houses
- District heating network with biomass (2.4+1.5 MW)

Case: The municipality of Melhus

Investment alternatives

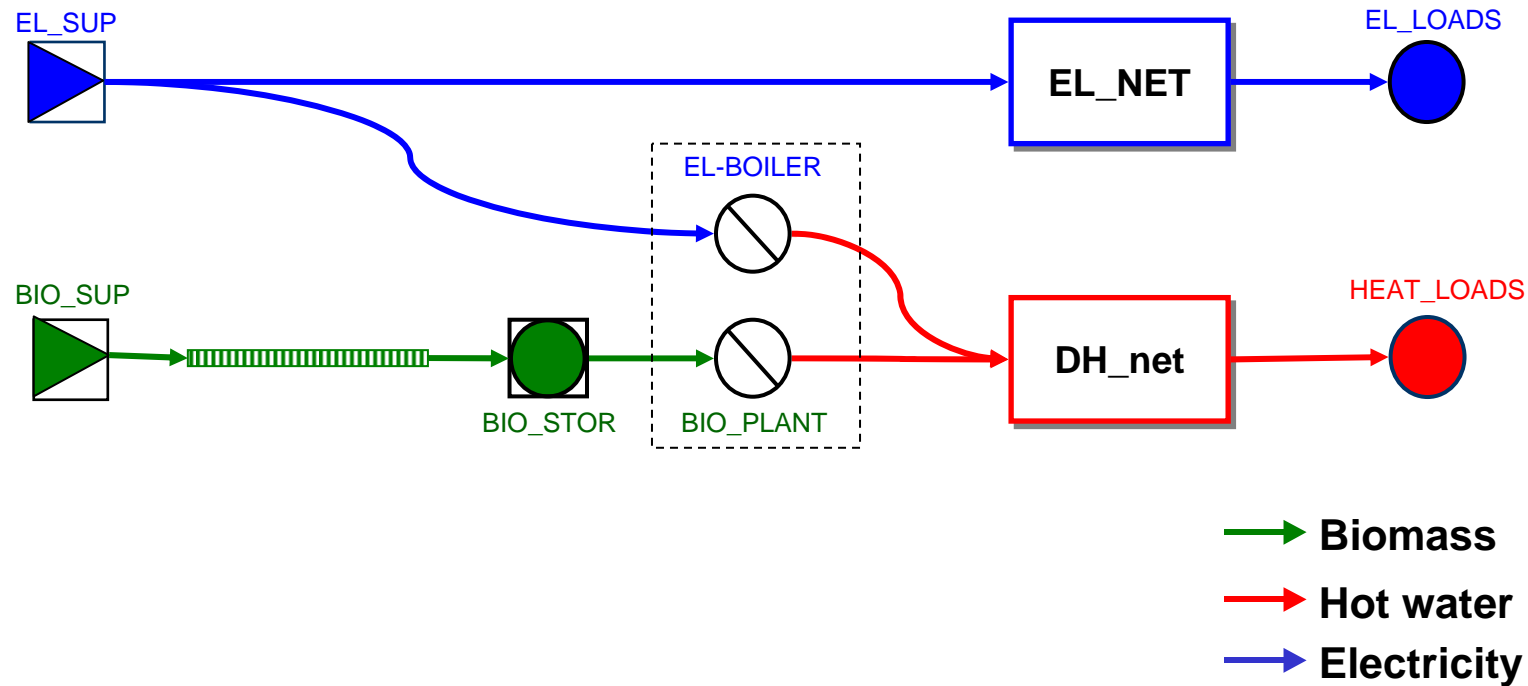
A: "Business as usual" (all electricity)



Case: The municipality of Melhus

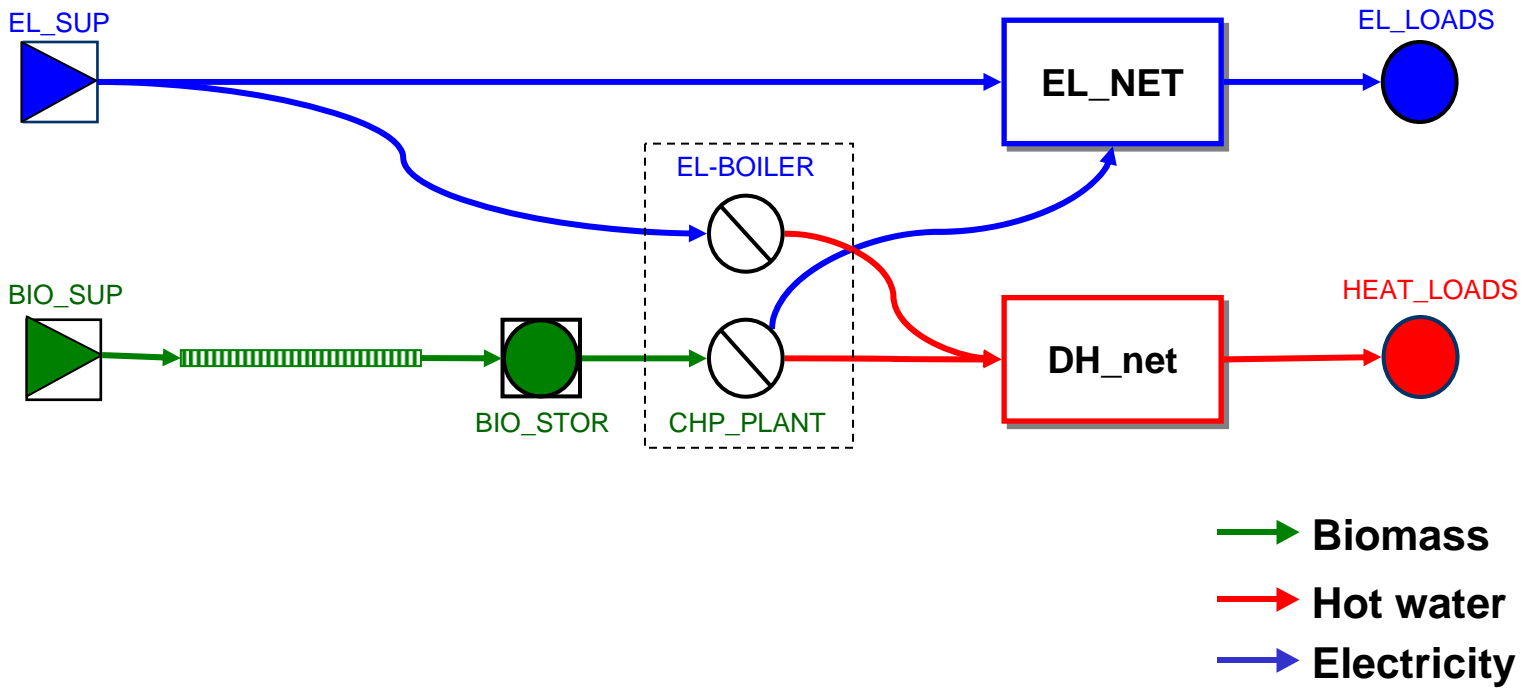
Investment alternatives

B: District heating with biomass



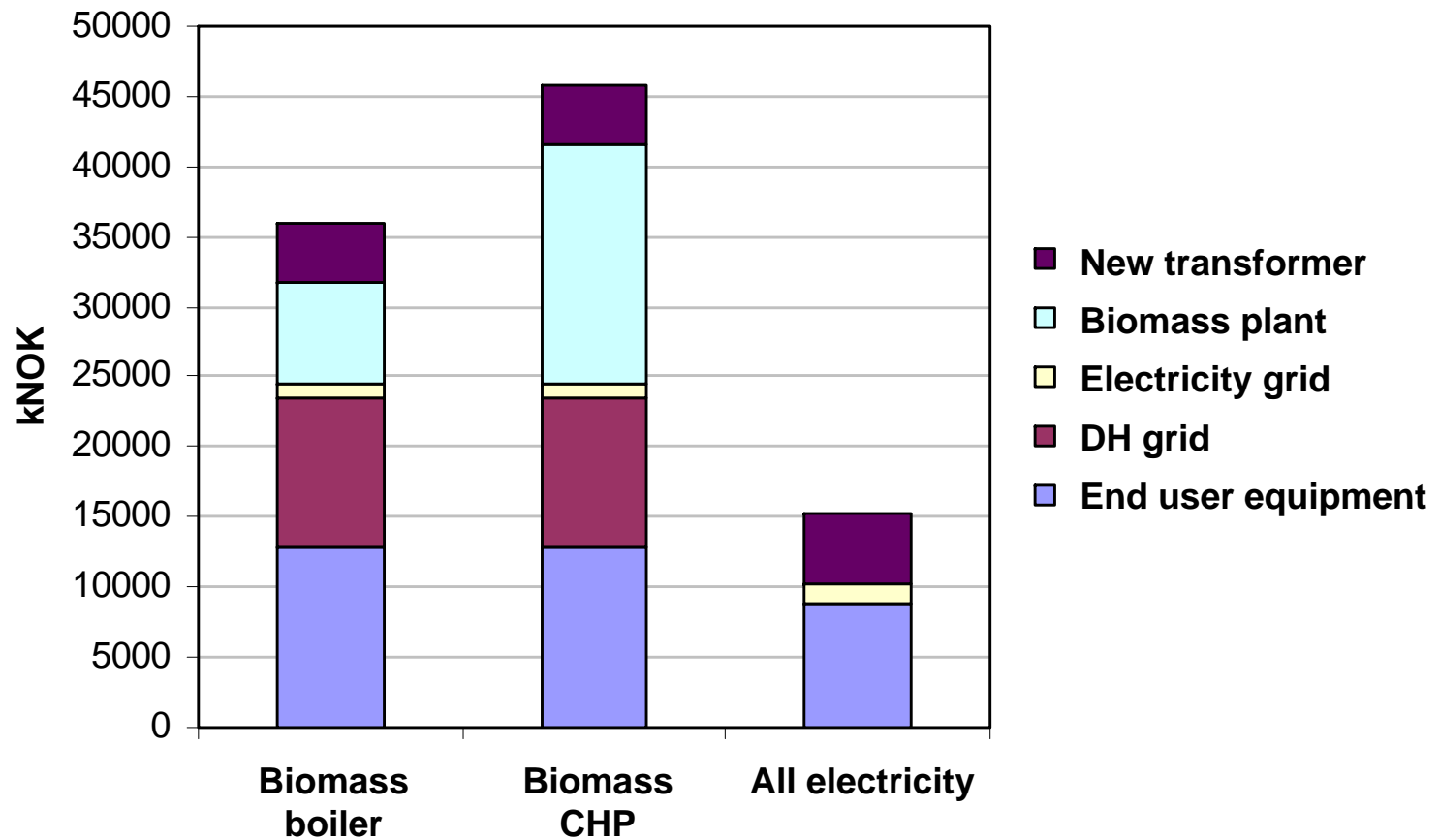
Case: The municipality of Melhus
Investment alternatives

C: CHP with biomass



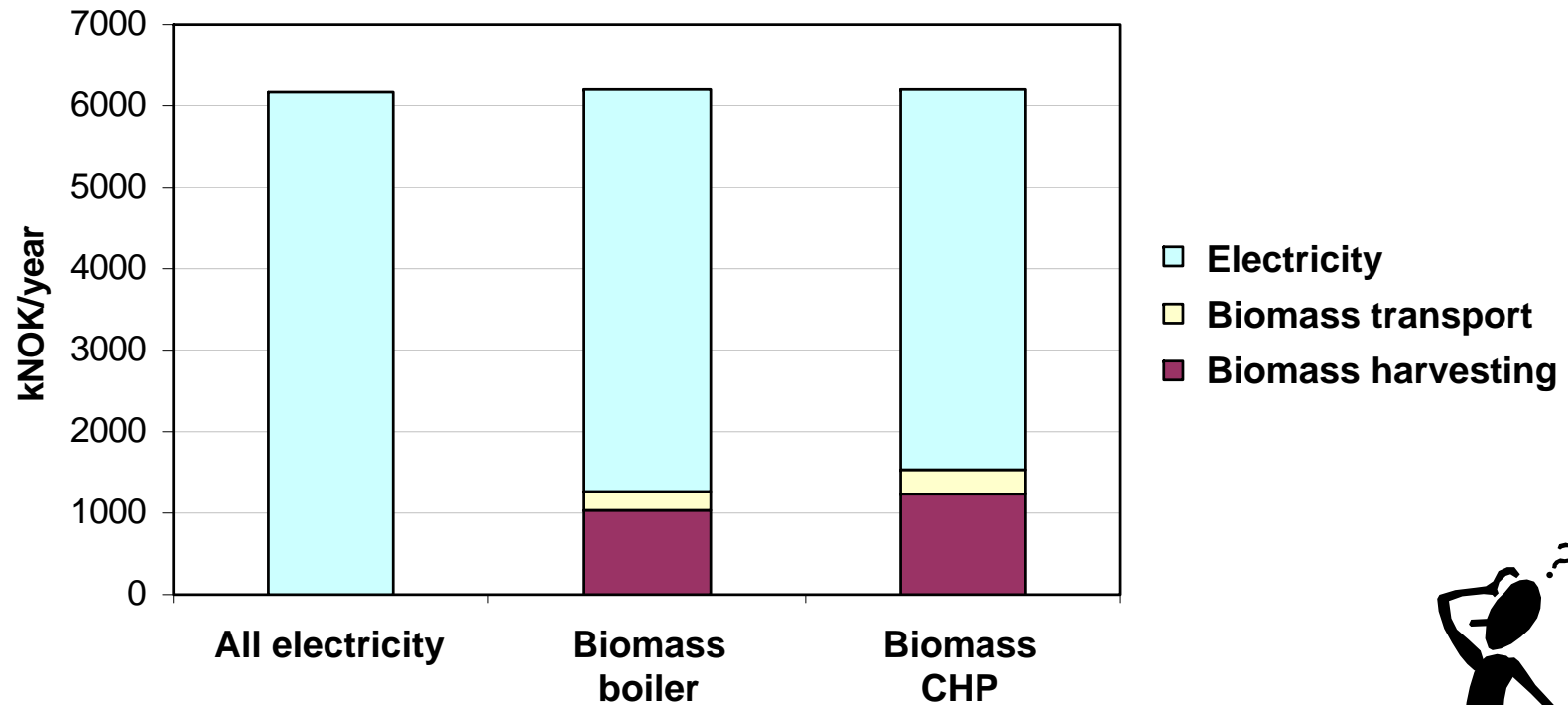
Case: The municipality of Melhus

Investment breakdown



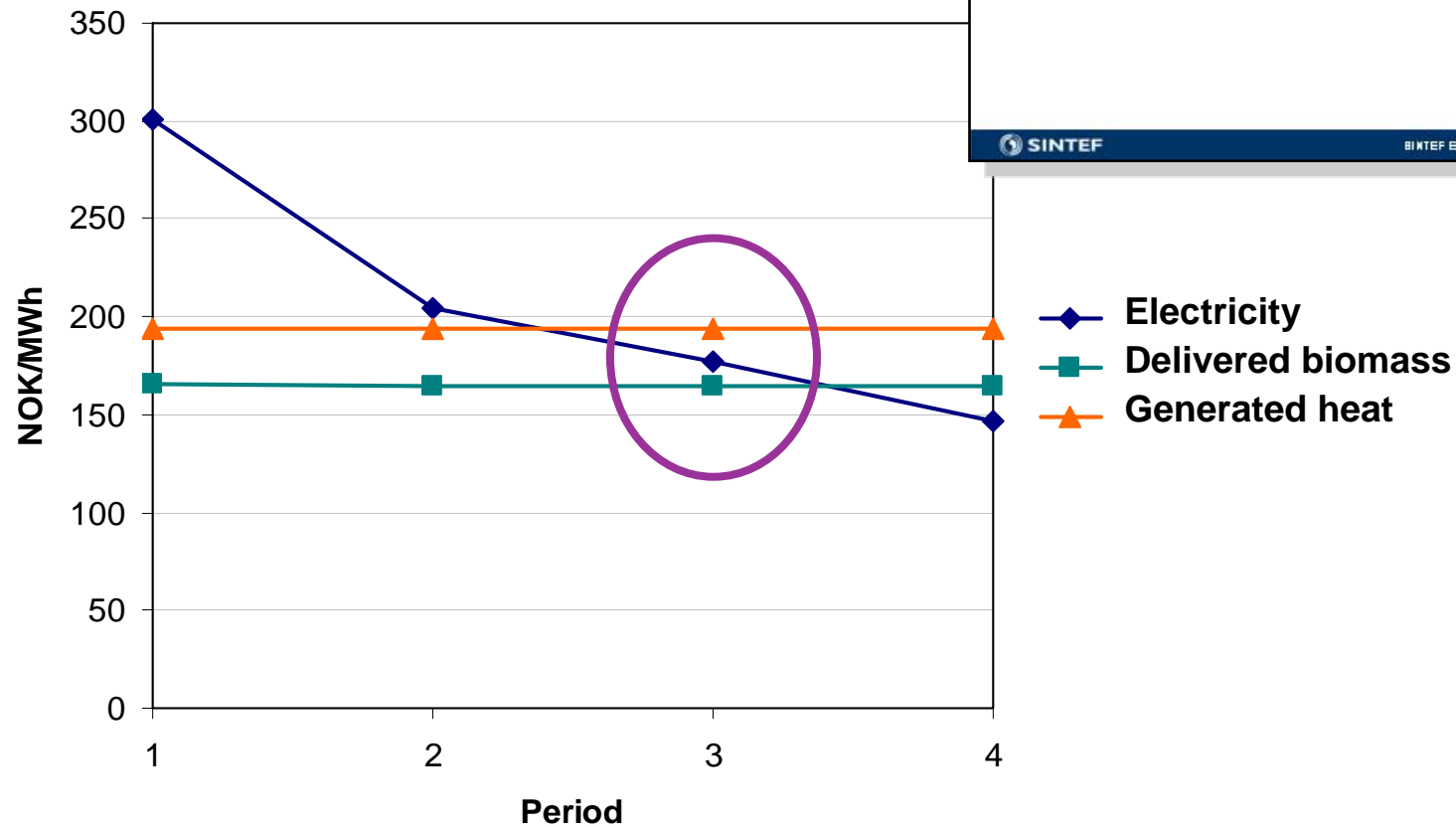
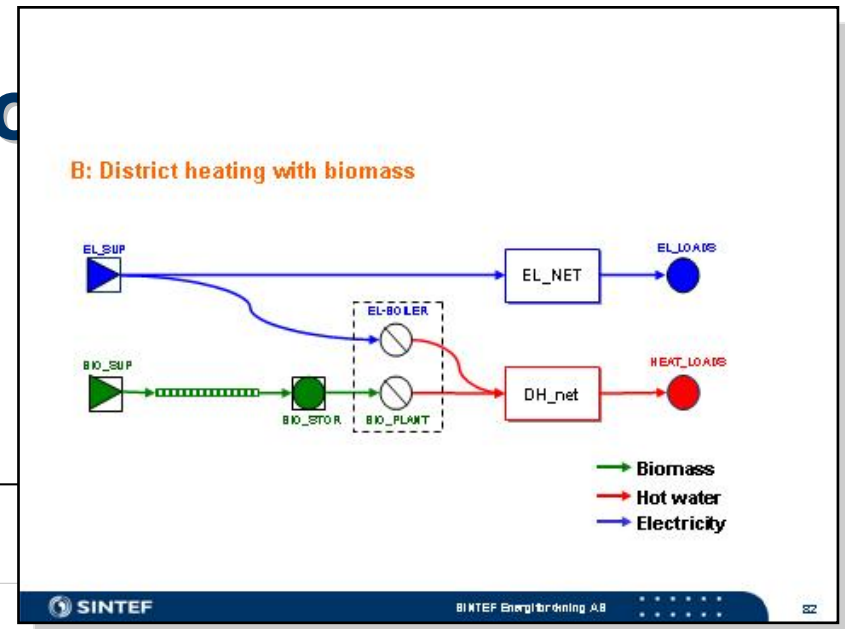
Case: The municipality of Melhus

Annual operating cost breakdown



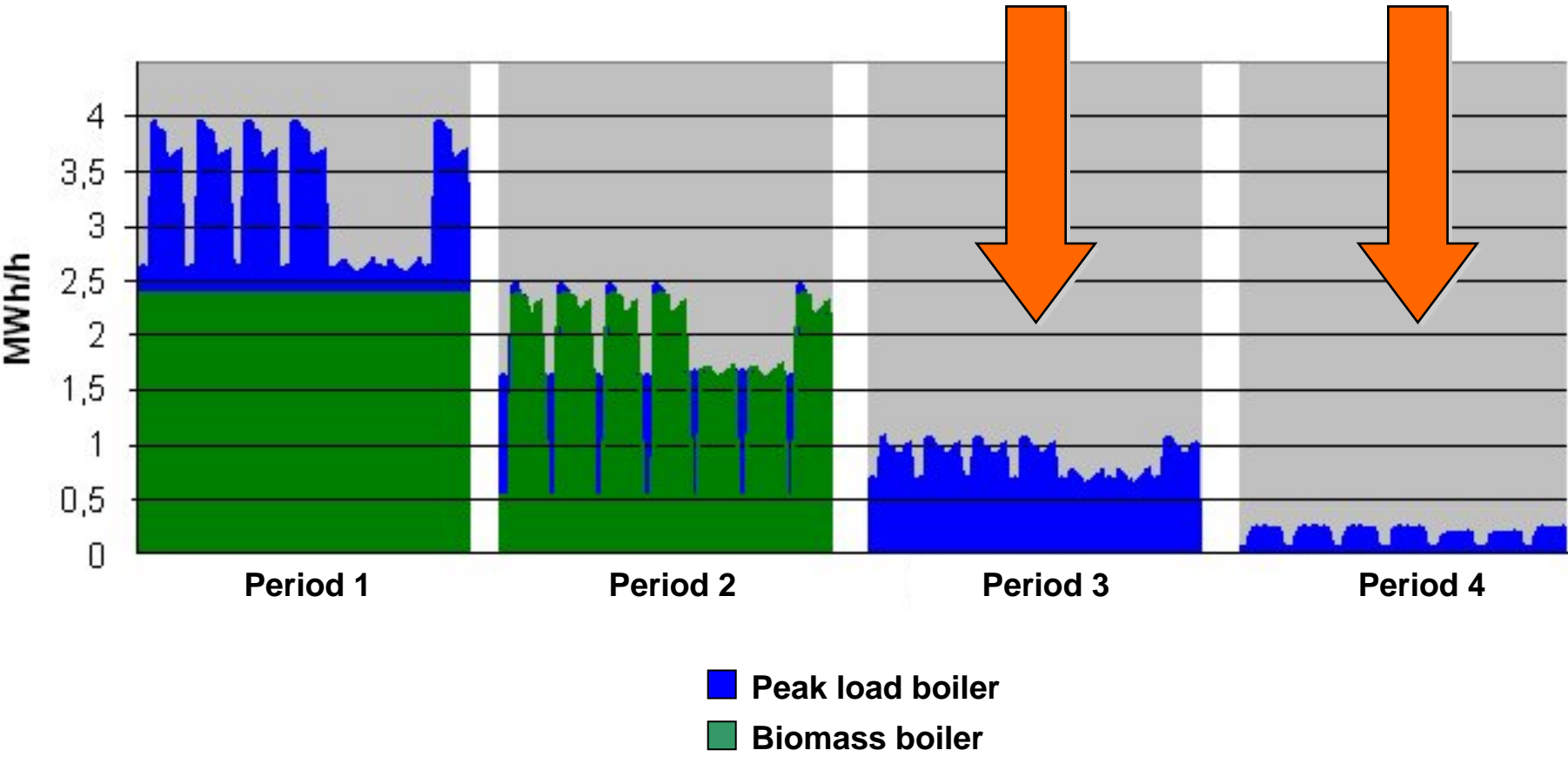
Case: The municipality of Melhus

Annual price distribution



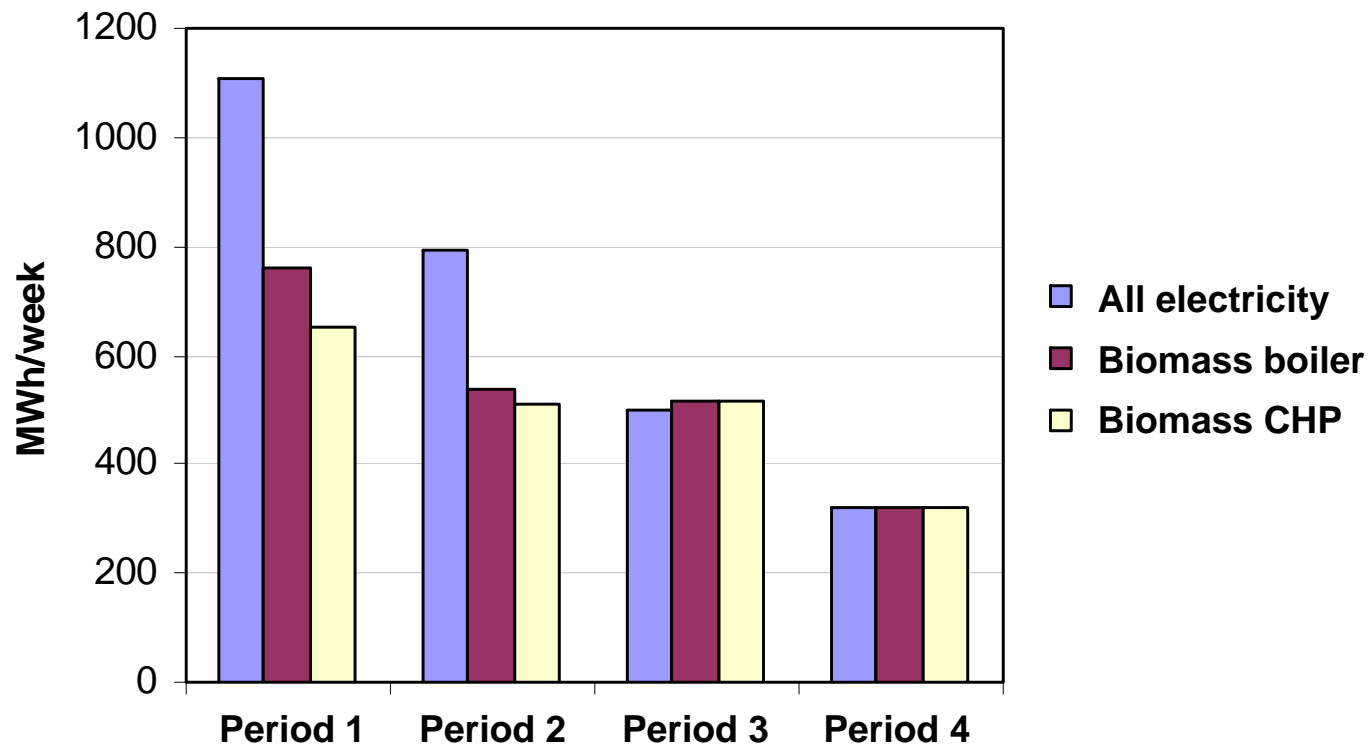
Case: The municipality of Melhus

Weekly profiles of biomass unit



Case: The municipality of Melhus

Electricity demand



Case: The municipality of Melhus

Total annual cost

